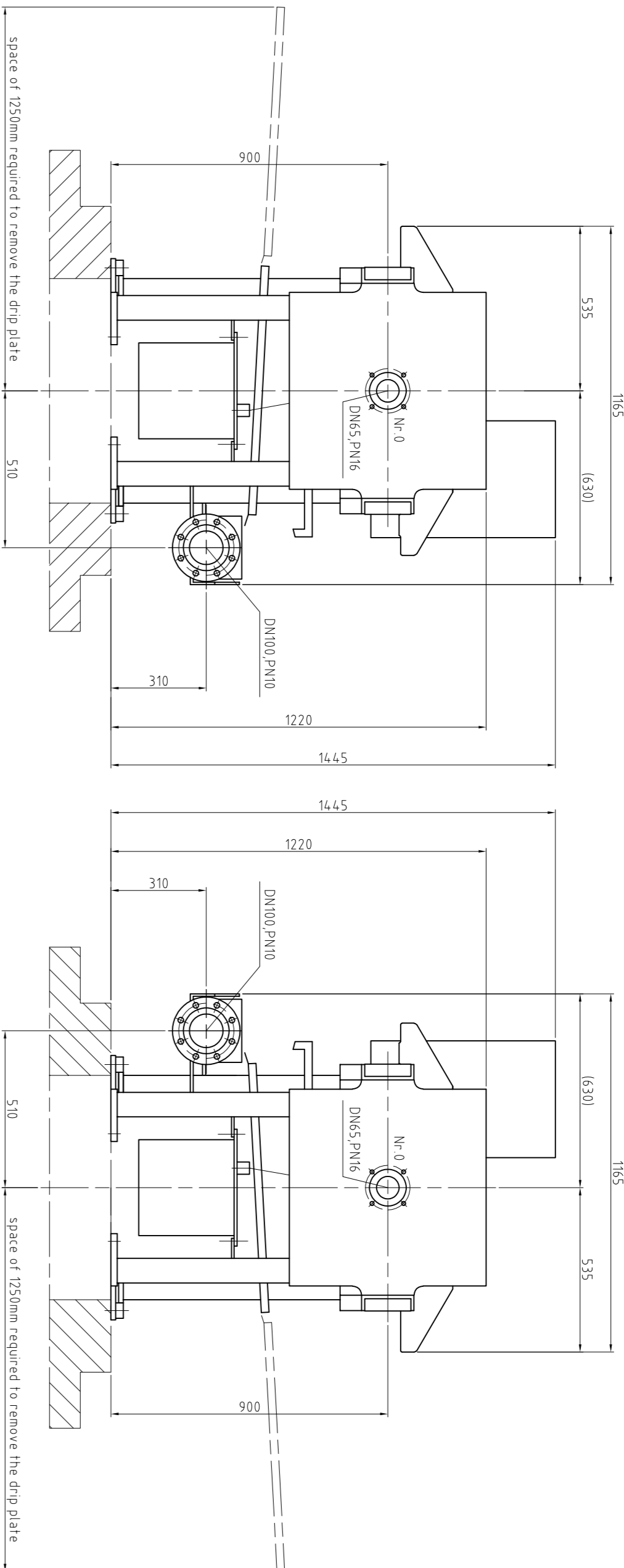


UP to frame size 630/40

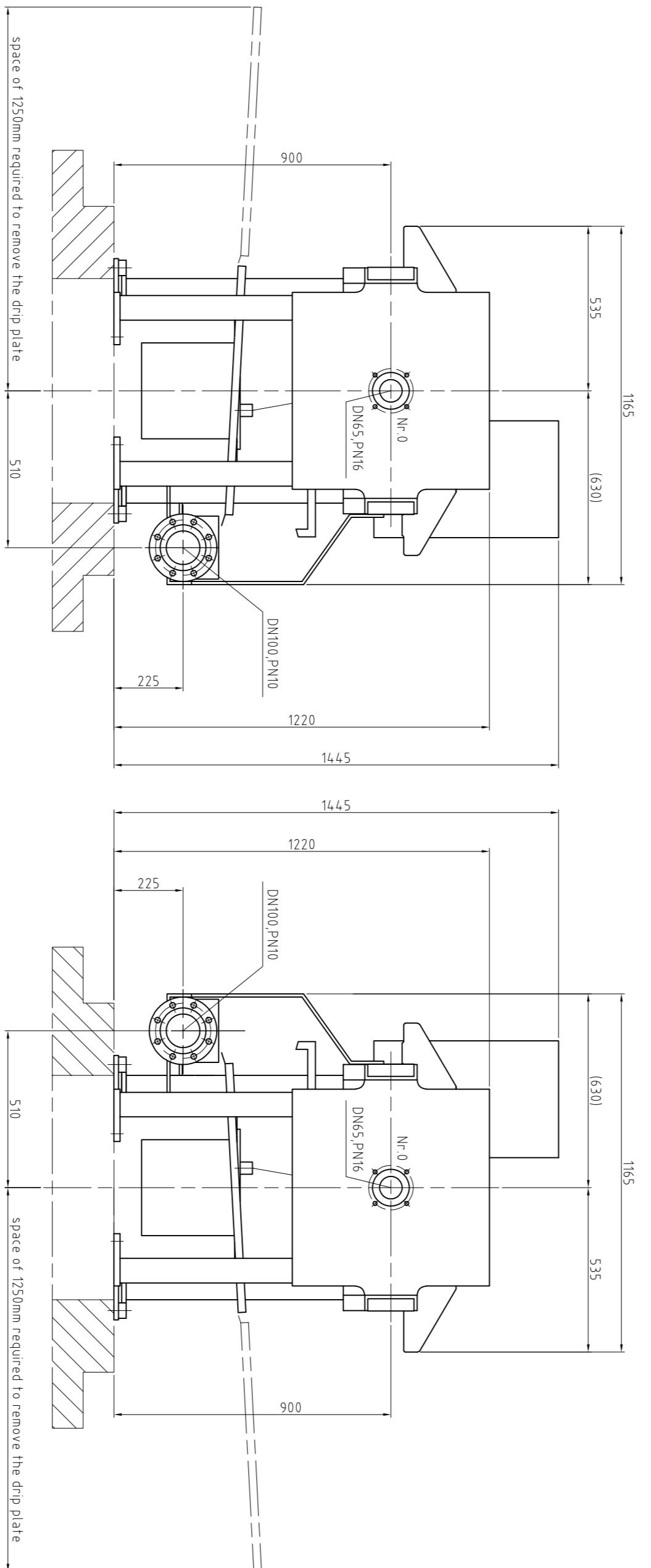
design with open filtrate outlet
operating side right and launder discharge Pos. 2



design with open filtrate outlet
operating side left and launder discharge Pos. 4

frame size 630/50+60

design with open filtrate outlet
operating side right and launder discharge Pos. 2



design with open filtrate outlet
operating side left and launder discharge Pos. 4

max. filtration pressure: 15 bar overpressure
max. closing pressure: 450 bar overpressure
terminal power of the motor pump: 2,1 kW
filter plates of PP

* motor pump with automatic pressure adjustment

size of press	630/20	630/30	630/40	630/50	630/60
no. of chambers	20	30	40	50	60
filter area	1302	1953	2604	3255	3906
contents of press	14,4	215	288	359	431
weight of empty press	1750	1950	2100	2300	2500
plate length	1615	1095	2195	2655	3115
foundation dimension "A"	1805	2325	2845	3365	3885
V1, V2, V3 and V4 max.	5	6	7	7,5	8,5
H =	4N	2	2,5	3	3,5
bill of material no. with launder discharge "right" - Pos. 2	206615495	206615496	206615497	206615498	206615499
bill of material no. with launder discharge "left" - Pos. 4	206615505	206615506	206615507	206615508	206615509

H = horizontal force resulting from changes in length caused thermally and mechanically

Revision	Change code number	Discipline	Author	Checked	Released
01					

DIMENSION SHEET
chamber filter press 630x630, open filtrate outlet w. MPN hydraulic unit

Drawing No. **702657856 B**
Scale **1:1**
Date **1.15**

